



GOOD MORNING  
Have Good Trading Day

MONDAY



Price is what you pay.  
Value is what you get.

- Warren Buffet



## MARKET PULSE

### INDIAN INDICES

NAME	CMP	NET CH.	%
SENSEX	23709	+59	+0.25
NIFTY	7210	+19	+0.26

### INDIAN ADR'S

SYMBOL	CLOSE	GAIN/ LOSS %
DRREDDY	44.58	-0.01
HDFCBANK	54.70	-0.66
ICICIBK	5.65	+0.05
INFY	16.39	-0.02
TATAMOTOR	23.18	+0.09
WIPRO	11.62	+0.02

### FII AND MF ACTIVITY

SYMBOL	In Crs.
FIIs Eq (Provisional)	-191.73
FIIs Index Future	-846.36
FIIs Index Options	-1647.70
FIIs Stock Future	-33.49
FIIs Stock Options	-93.95
DII's Eq (Provisional)	16.53

### CURRENCY

RBI RATE	19-FEB-2016
RUPEE - \$	68.4940
EURO	76.3297
YEN 100	60.1500
GBP	97.8642

## MARKET PULSE

### GLOBAL INDICES

NAME	CMP	NET CH.	%
DOW	16391	-21	-0.13
NASDAQ	4504	+16	+0.38
NIKKEI	16060	+92	+0.58
HANG SENG	19470	+184	+0.96
SGX NIFTY	7215	+15	+0.22

### WORLD COMMODITIES

FUTURE	U\$\$	CHANGES
CRUDE	32.17	+0.42
NATURAL GAS	1.843	-0.024
GOLD	1223.5	-7.3
SILVER	15.280	-0.093
COPPER	2.0950	+0.0185

### WORLD EVENTS

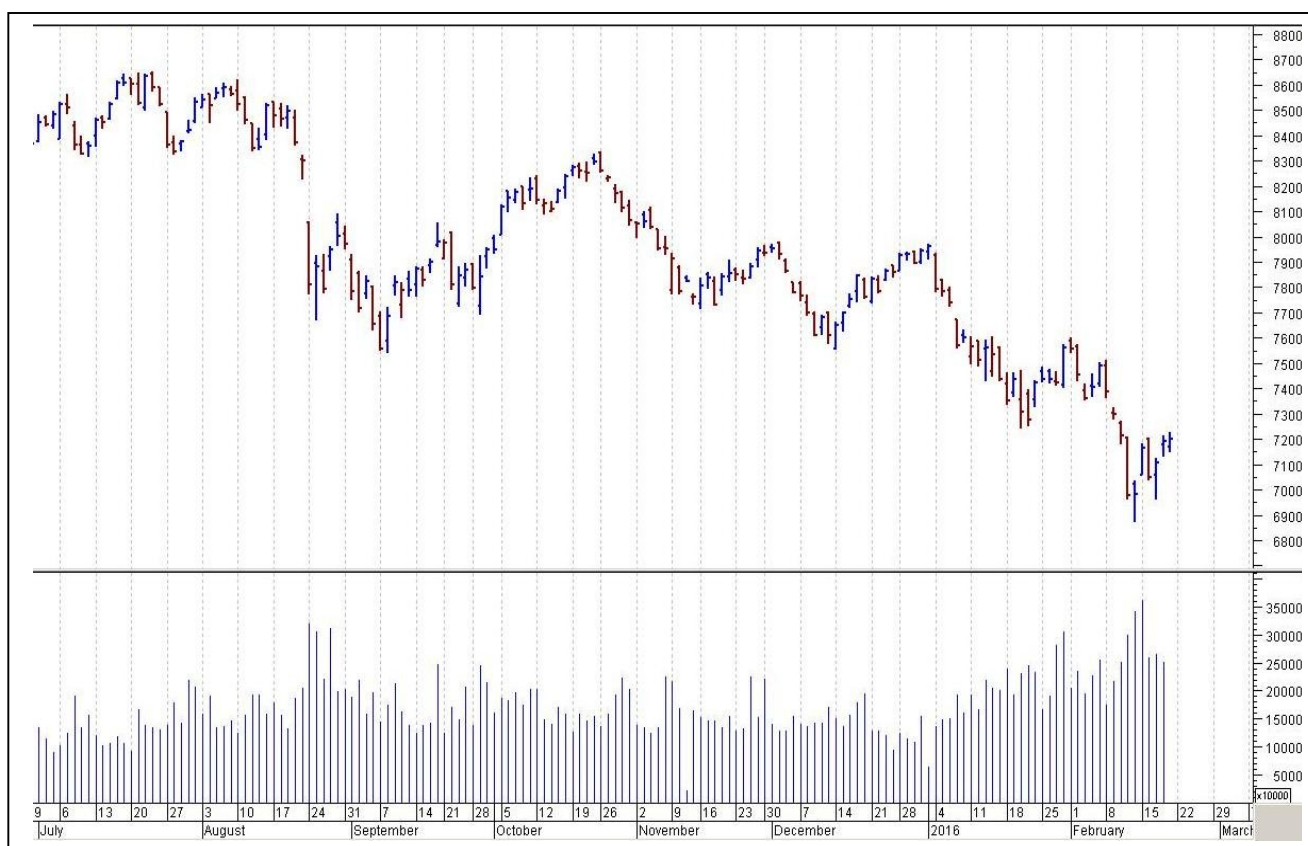
- US:Flash Manufacturing PMI
- UK:CBI Industrial Order Expectations

## TOP STORY

- Government mulls 49 percent FDI in insurance sector via automatic route -FDI through automatic route currently allowed up to 26 percent
- AB Nuvo sets up payments bank JV with Idea Cellular
- Lupin -Company along with Gavis to divest 2 generic drugs
- Godrej Properties to sell commercial assets worth Rs 1,500 crore: PTI
- RCF likely to get PIB clearance for Rs 5,500 crore urea plant: PTI
- Divi's Labs says US FDA inspected unit-2 at Chippada, Vizag; no observations made
- US FDA concludes inspection at Strides-Shasun Bengaluru facility
- ONGC gets green panel nod for Rs 1,752 crore project in Gujarat: PTI
- JK Tyre in focus: CCI Approves acquisition of Cavendish Industries
- IDBI Bank to halve stake (currently 5 percent) in NSE by March 2016: BS



## NIFTY CHART



## MARKET COMMENTARY

Indian equity markets bounced back in the week ended Friday, 19 February 2016, on positive global cues. The barometer index, the S&P BSE Sensex, regained the psychologically important 23,000 level and the 50-unit Nifty 50 index settled above the psychologically important 7,000 level. The Sensex and the Nifty rose in four out of five trading sessions in the week ended Friday, 19 February 2016. The Sensex rose 723.03 points or 3.15% to settle at 23,709.15. The Nifty rose 229.80 points or 3.29% to settle at 7,210.75. The broad market depicted strength. The BSE Mid-Cap index rose 1.95%. The BSE Small-Cap index rose 2%. Both these indices underperformed the Sensex. For today's trade Nifty likely to trade in the range between 7250 – 7350 in the upper side and 7050 – 7000 in the lower side.

### MARKET LEVELS

	CMP	SUPPORT LEVELS				RESISTANCE LEVELS			
NIFTY	7210	7180	7150	7110	7050	7240	7280	7310	7350
USDINR	68.46	68.38	68.30	68.22	68.15	68.50	68.62	68.75	68.90





#### BULK DEALS (BSE)

SCRIP	CLIENT NAME	BUY/SELL	QUANTITY	PRICE
EVERESTIND	SBI MUTUAL FUND	B	574,278	201.8
EVERESTIND	RELIANCE MUTUAL FUND RELIANCE MID AND SMALL CAP FUND	S	574,278	201.8

#### BULK DEALS (NSE)

SCRIP	CLIENT NAME	BUY/SELL	QUANTITY	PRICE
BURNPUR	IMTIHAN DISTRIBUTORS PRIVATE LIMITED	SELL	415241	10
NIRVIKARA	AMANSA HOLDING PRIVATE LTD.	SELL	75000	41.44

#### SCRIP'S IN F&O BAN

(To resume for normal trading below 80% of market wide limit required)

JISLJALEQS, INDIACEM, JINDALSTEL

#### Initial Public Offering (IPO)

Company Name	Security type	Issue Start Date	Issue End Date	Status
NIL				



NIFTY 50 STOCKS: SUPPORT & RESISTANCE						
Symbol	Close	Support 1	Support 2	Pivot Point	Resistance1	Resistance2
ACC	1278	1257	1237	1269	1290	1302
ADANI PORTS	209	207	204	209	212	214
AMBUJACEM	195	194	193	195	196	197
ASIANPAINT	855	837	819	847	865	875
AXISBANK	393	389	386	393	396	400
BAJAJ-AUTO	2456	2419	2382	2443	2480	2504
BANKBARODA	140	137	134	139	142	145
BHARTIARTL	326	319	312	324	330	335
BHEL	102	99	95	102	105	109
BOSCH LTD	16804	16403	16001	16651	17053	17301
BPCL	766	755	744	772	783	801
CAIRN	132	128	124	130	134	136
CIPLA	525	519	513	525	531	537
COALINDIA	312	309	306	313	316	320
DRREDDY	3059	3035	3011	3070	3094	3129
GAIL	326	318	309	322	331	335
GRASIM	3428	3409	3390	3429	3448	3468
HCLTECH	852	834	817	846	863	874
HDFC	1061	1050	1038	1057	1069	1077
HDFCBANK	989	978	966	985	997	1004
HEROMOTOCO	2706	2636	2565	2673	2744	2781
HINDALCO	69	68	66	69	70	71
HINDUNILVR	828	817	806	824	835	843
ICICIBANK	199	196	192	199	202	205
IDEA	108	106	103	108	110	112
INDUSINDBK	842	835	828	842	848	855
INFY	1127	1116	1105	1125	1136	1145
ITC	305	302	299	304	307	309
KOTAKBANK	631	624	618	632	639	647
LT	1151	1132	1113	1150	1169	1188
LUPIN	1789	1753	1716	1778	1814	1839
M&M	1230	1205	1179	1227	1252	1274
MARUTI	3579	3545	3512	3593	3626	3674
NTPC	130	128	125	129	131	133
ONGC	211	207	204	210	214	216
PNB	76	73	70	75	78	80
POWERGRID	141	139	138	141	142	144
RELIANCE	944	937	929	945	952	960
SBIN	165	159	154	162	168	171
SUNPHARMA	864	857	850	864	871	877
TATAMOTORS	318	313	308	316	322	325
TATAPOWER	59	58	57	59	60	61
TATASTEEL	253	249	244	252	256	259
TCS	2320	2308	2296	2317	2329	2339
TECHM	441	431	421	437	447	453
ULTRACEMCO	2845	2796	2748	2823	2871	2898
VEDL	75	73	72	74	76	77
WIPRO	547	541	534	545	552	556
YESBANK	713	706	700	715	721	730
ZEEL	384	373	363	380	391	398



## CORPORATE ACTION / BOARD MEETINGS

NSE Download Ref.No.:NSE/CML/31672:- Trading in Equity Shares of Elder Pharmaceuticals Limited and Era Infra Engineering Limited will be suspended w.e.f February 25, 2016 on account of non-compliance with Clause 41 of the Listing Agreement

NSE Download Ref No :NSE/FAOP/31700:- Introduction of Futures & Options Contracts on 7Additional Individual Securities w.e.f. February 26, 2016: ICIL, PCJEWELLER, TATAELXSI, GRANULES, CUMMINSIND, MCDOWELL-N, KPIT

### BOARD MEETINGS

COMPANY NAME	DATE	PURPOSE	RS. PER SH.
WHEELS	22-Feb-16	Dividend	3.5
ACC	22-Feb-16	Dividend	6
AMBUJACEM	22-Feb-16	Dividend	1.2
NATCOPHARM	22-Feb-16	Dividend	1.25
SELAN	22-Feb-16	Dividend	5
IOC	23-Feb-16	Dividend	5.5
GOLDIAM	23-Feb-16	Dividend	2
NDL	23-Feb-16	Dividend	0.8
MINDACORP	23-Feb-16	Dividend	0.2
MANAPPURAM	23-Feb-16	Dividend	0.45
NMDC	24-Feb-16	Dividend	9.5
HITECHGEAR	25-Feb-16	Dividend	1.5
BFUTILITIE	29-Feb-16	Annual General Meeting	
BPCL	3-Mar-16	Dividend	3.5
CRISIL	8-Mar-16	Dividend	10

## NEWS & RUMOURS:

- Gold (Spot Dollar) major support = \$1197/\$1170 & Resistance = \$1258/\$1281.
- Crude oil range->\$25 to \$35.
- Stocks Erode Weekly Gain as Oil Falls; Treasuries Drop after CPI : - Global stocks still headed for their best week since October. Core U.S. consumer prices rise by most in over four years. Stocks worldwide trimmed weekly gains as oil declined for the first time in three days, denting optimism that this year's rout in commodities was easing.
- Dollar index hits 2-week highs after upbeat U.S. data: - The dollar rose to two-week highs against the other major currencies on Friday, after the release of upbeat U.S. inflation data boosted optimism over the strength of the economy. Data showed that the [U.S. consumer price index](#) was flat in January, compared to expectations for a 0.1% downtick and after a 0.1% fall the previous month. Year-on-year, [consumer prices](#) increased by 1.4% last month. [Core CPI](#), which excludes food and energy, rose 0.3% in January, more than the expected 0.2% gain and after an increase of 0.2% in December.
- Oil futures tumble amid ongoing supply worries: - U.S. oil futures tumbled over 4% on Friday, as ongoing concerns over a global supply glut persisted.
- Natural gas prices struggle near 2-month lows after U.S. storage data: - U.S. natural gas futures struggled near the lowest level in two months in North America trade on Thursday, despite data showing that U.S. natural gas supplies in storage fell more than expected last week. The U.S. Energy Information Administration said in its weekly report that [natural gas storage](#) in the U.S. in the week ended February 12 fell by 158 billion cubic feet, more than expectations for a decline of 154 billion.

## TRENDS & OUTLOOK – DATE: 22- Feb- 2016

### PRECIOUS METALS:

COMMDITY (MCX)	S2	S1	PIVOT POINT	R1	R2
GOLD (Apr)	29001	29250	29475	29745	29966
SILVER (Mar)	35100	36300	37500	38600	39740

### BASE METALS

COMMDITY (MCX)	S2	S1	PIVOT POINT	R1	R2
COPPER (Feb)	304	310	315	321	325
ZINC (Feb)	113.90	116.10	118.55	121.75	124.45
LEAD (Feb)	114.30	116.55	119.10	121.75	124.90
NICKEL (Feb)	547	561	577	594	619

### ENERGY

COMMDITY (MCX)	S2	S1	PIVOT POINT	R1	R2
CRUDE OIL (Mar)	2001	2100	2223	2297	2375
NATURAL GAS (Feb)	115	120	126	131	136

### DATE TALKS : TODAY'S ECONOMIC DATA :

German Flash Manufacturing PMI, Flash Manufacturing PMI.





Registered Office

Indira House, 3rd Floor, 5 Topiwala Lane,  
Opp. Lemington Road Police Station, Grant Road (East), Mumbai - 400007.

Corporate Office

'Ramavat House' E-15, Saket Nagar, Indore - 452018 (M.P.)

Customer Care

Tel: +91-731-4097170/ 71/ 72/ 73/ 74 M. +91 93031 72345

Email: [customercare@indiratrade.com](mailto:customercare@indiratrade.com) [www.indiratrade.com](http://www.indiratrade.com)



INSTITUTIONAL DEALING UNIT

Africa House, 5, Topiwalla Lane, Lamington Road, Mumbai, 400007

Tel: +91 22 30080678 Fax : +91 22 23870767 Email : [ie@indiratrade.com](mailto:ie@indiratrade.com)

**Disclaimer**

This report is for private circulation within the Indira Group. This report is strictly confidential and for information of the selected recipient only and may not be altered in any way, transmitted to, copied or distributed, in part or in whole, to any other person or to the media or reproduced in any form. This report should not be construed as an offer or solicitation to buy or sell any securities or any interest in securities. It does not constitute a personal recommendation or take into account the particular investment objectives, financial situations, or any such factor. The information, opinions estimates and forecasts contained here have been obtained from, or are based upon, sources we believe to be reliable, but no representation of warranty, express or implied, is made by us to their accuracy or completeness. Opinions expressed are our current opinions as of the date appearing on this material only and are subject to change without notice.